



Queens Court, Haverhill, CB9 9AU



Queens Court

Haverhill,
CB9 9AU

A well presented four bedroom property located at Queens Court, Haverhill close to amenities and schools. The property benefits from a modern kitchen, bathroom & enclosed rear garden. Available 8th May 2026.

- Four Bedrooms
- Enclosed Rear Garden
- Modern Kitchen
- Rear Garden
- EPC Rating C
- Council Tax Band B



£1,350 PCM





GROUND FLOOR

Hall

Stairs, doors to:

Living Room

Window to front.

Kitchen

Window to rear, Storage cupboard, door to:

Utility Hallway

Door to:

WC

FIRST FLOOR

Landing

Storage cupboard, doors to:

Bedroom 1

Window to front, wardrobe.

Bedroom 2

Window to rear, wardrobe.

Bedroom 3

Window to front, wardrobe.

Bedroom 4

Window to front.

Bathroom

Window to rear.

OUTSIDE

Enclosed rear garden, patio area and concrete path adjacent to grass area. Shed unit in rear garden.

Material Information

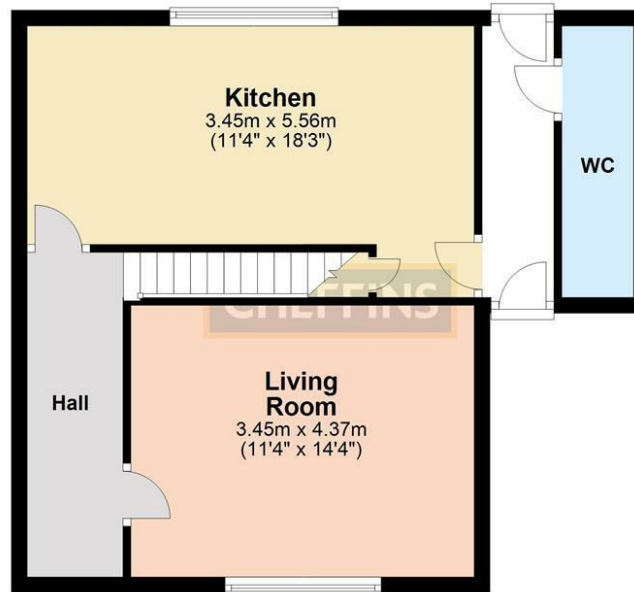
For more information on this property please refer to the Material Information brochure on our Website



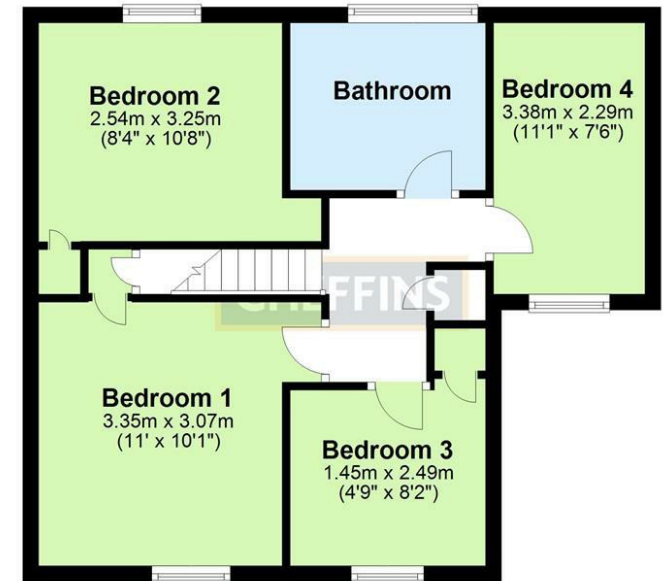
Energy Efficiency Rating

	Current	Potential
<i>Very energy efficient - lower running costs</i>		
(92 plus) A		88
(81-91) B		
(69-80) C	74	
(55-68) D		
(39-54) E		
(21-38) F		
(1-20) G		
<i>Not energy efficient - higher running costs</i>		
England & Wales	EU Directive 2002/91/EC	

Ground Floor



First Floor



Note: Not to scale - For guidance purposes only
Plan produced using PlanUp.

Agents note:

For more information on this property please refer to the Material Information Brochure on our website.

Cavendish House, 27a High Street, Haverhill, Suffolk, CB9 8AD | 01440 707076 | cheffins.co.uk

IMPORTANT: we would like to inform prospective purchasers that these sales particulars have been prepared as a general guide only. A detailed survey has not been carried out, nor the services, appliances and fittings tested. Room sizes should not be relied upon for furnishing purposes and are approximate. If floor plans are included, they are for guidance only and illustration purposes only and may not be to scale. If there are any important matters likely to affect your decision to buy, please contact us before viewing the property.

